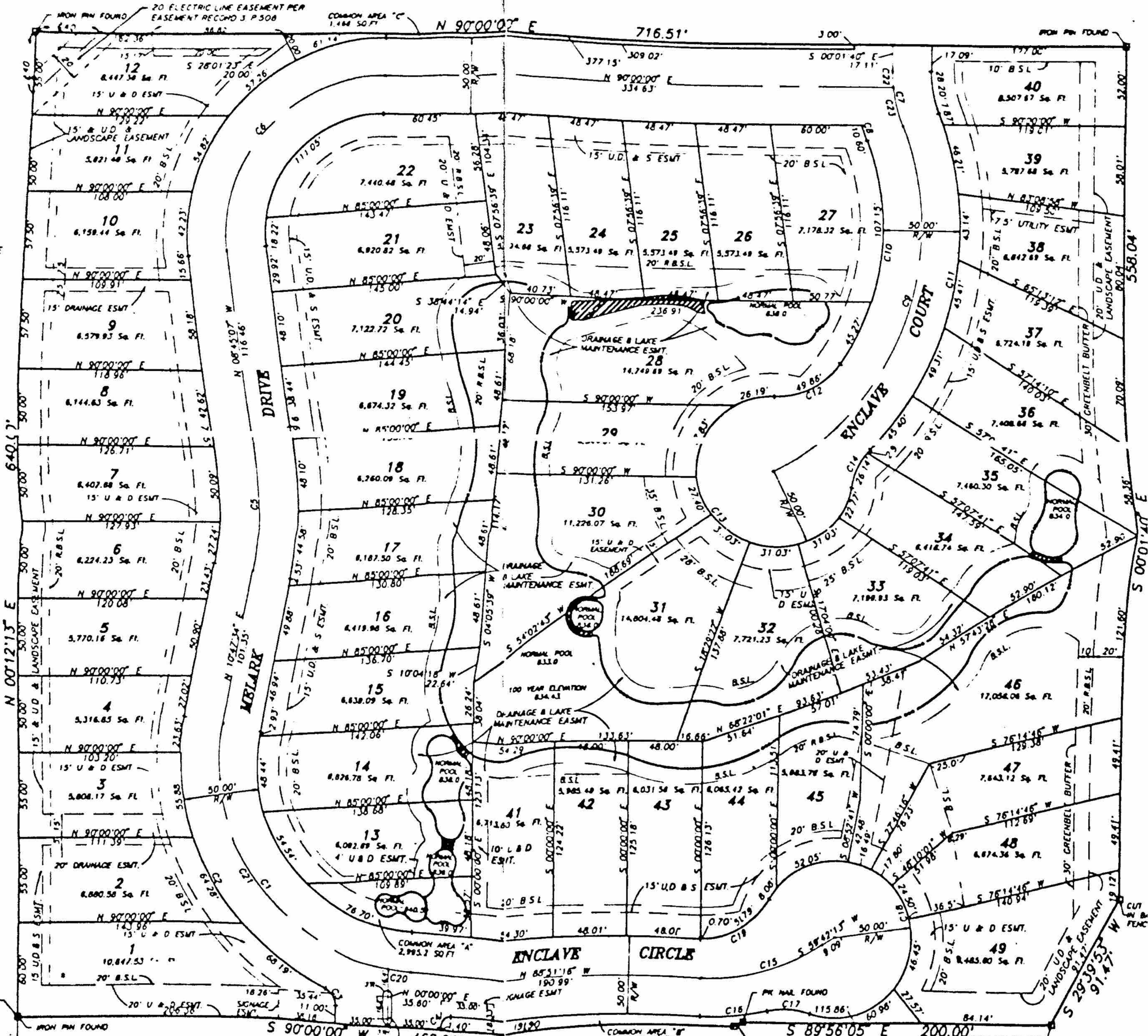


SECONDARY PLAT THE ENCLAVE OF CARMEL



I, WILLIAM L. DOUGHERTY HEREBY CERTIFY THAT I AM A REGISTERED LAND SURVEYOR LICENSED IN COMPLIANCE WITH THE LAWS OF THE STATE OF INDIANA.

THIS PLAT CORRECTLY REPRESENTS A SURVEY COMPLETED BY ME ON SEPT 9, 1991

THAT ALL THE MONUMENTS SHOWN THEREON ACTUALLY EXIST AND THAT THE LOCATION, SIZE, TYPE AND MATERIAL ARE ACCURATELY SHOWN AND THAT ALL REQUIREMENTS SPECIFIED IN THE SUBDIVISION ORDINANCE OF THE CITY OF CARMEL HAVE BEEN MET.

William L. Dougherty
WILLIAM L. DOUGHERTY, L.S.

126th STREET

DEVELOPER

EATON & LAUTH COMMUNITY DEVELOPMENT
10333 N MERIDIAN ST.
INDIANAPOLIS, IN. 46290
317-848-6500

Note:
ALL STREETS SHOWN ON THIS PLAT AND NOT HERETOFORE DEDICATED ARE DEDICATED TO THE PUBLIC.

Plat Prepared By:

WOOLPERT CONSULTANTS
7140 Waldemar Drive
Indianapolis, Indiana 46388-2
317-299-7500
08/30/90