



contactcolorways@gmail.com
317-737-8699

Consult Date 6/7/2021

Description

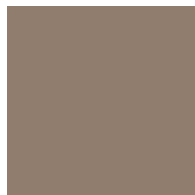
Homeowners association exterior paint colors

Main/Primary Colors

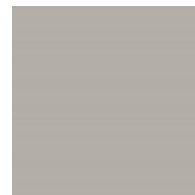
These primary colors are for all parts of the body of a house including soffits, gutters and trim boards. Only one primary color may be used on a house. Shutters are to be painted an accent color to match front door and window trim accent color.



Space Siding, trim, windows
Color Moth Wing SW 9174
Sheen Satin



Space Siding, trim, windows, mailboxes
Color Virtual Taupe SW 7039
Sheen Satin



Space Siding, trim, windows
Color Dorian Gray SW 7017
Sheen Satin



Space Siding, trim, windows
Color Stone Lion SW 7507
Sheen Satin



Space Siding, trim, windows
Color Worldly Gray SW 7043
Sheen Satin



Space Siding, trim, windows
Color Antler Velvet SW 9111
Sheen Satin

Notes Antler Velvet (AV) is a commonly used and popular color in the community, but its orange-beige undertones can be a little strong in certain combinations. Stone Lion (SL) is an excellent alternative that also has an orange-beige undertone making it a familiar, warm color. The advantage of SL is that it is more muted and versatile. It's recommended as a replacement for AV as homeowners repaint houses over time.

All final color and product choices are solely the responsibility of the client. These recommendations are suggestions only and do not imply satisfaction or warranty of finished work, and Colorways, llc is not liable for quality of workmanship or selection of colors or products whether work is completed by the client or an independent contractor. Please remember that the digital representation of color on some devices may differ from the chips or final, applied paint, stain or other material.



contactcolorways@gmail.com
317-737-8699

Consult Date 6/7/2021

Color Plan

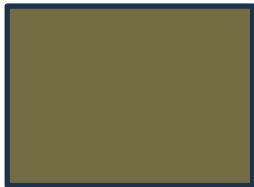
Rev 3

For

The Enclave of Carmel
Homeowners Association, Inc.
126th St. and Keystone
Carmel, IN 46032

Accent Colors

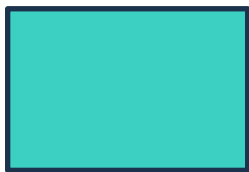
These colors are what may be used for front doors, window frames and shutters. The accent color used for the window frames must be used for the front door (and shutters when they exist). Urbane Bronze or Dense Forest are the preferred accent colors, although Blue Ridge can be used. This consistency unifies the look of the community.



Space	<u>Windows, front door, shutters</u>
Color	<u>Urbane Bronze SW 7048</u>
Sheen	<u>Satin</u>



Space	<u>Windows, front door, shutters</u>
Color	<u>Dense Forest SW 2259</u>
Sheen	<u>Satin</u>



Space	<u>Windows, front door, shutters</u>
Color	<u>Blue Ridge SW Custom Mix</u>
Sheen	<u>Satin</u>

Other

Space	<u>Trex Decking</u>
Color #1	<u>Gravel Path (versatile to grays and browns)</u>
Color #2	<u>Rope Swing (better suited for brown-based combinations)</u>

All final color and product choices are solely the responsibility of the client. These recommendations are suggestions only and do not imply satisfaction or warranty of finished work, and Colorways, llc is not liable for quality of workmanship or selection of colors or products whether work is completed by the client or an independent contractor. Please remember that the digital representation of color on some devices may differ from the chips or final, applied paint, stain or other material.